

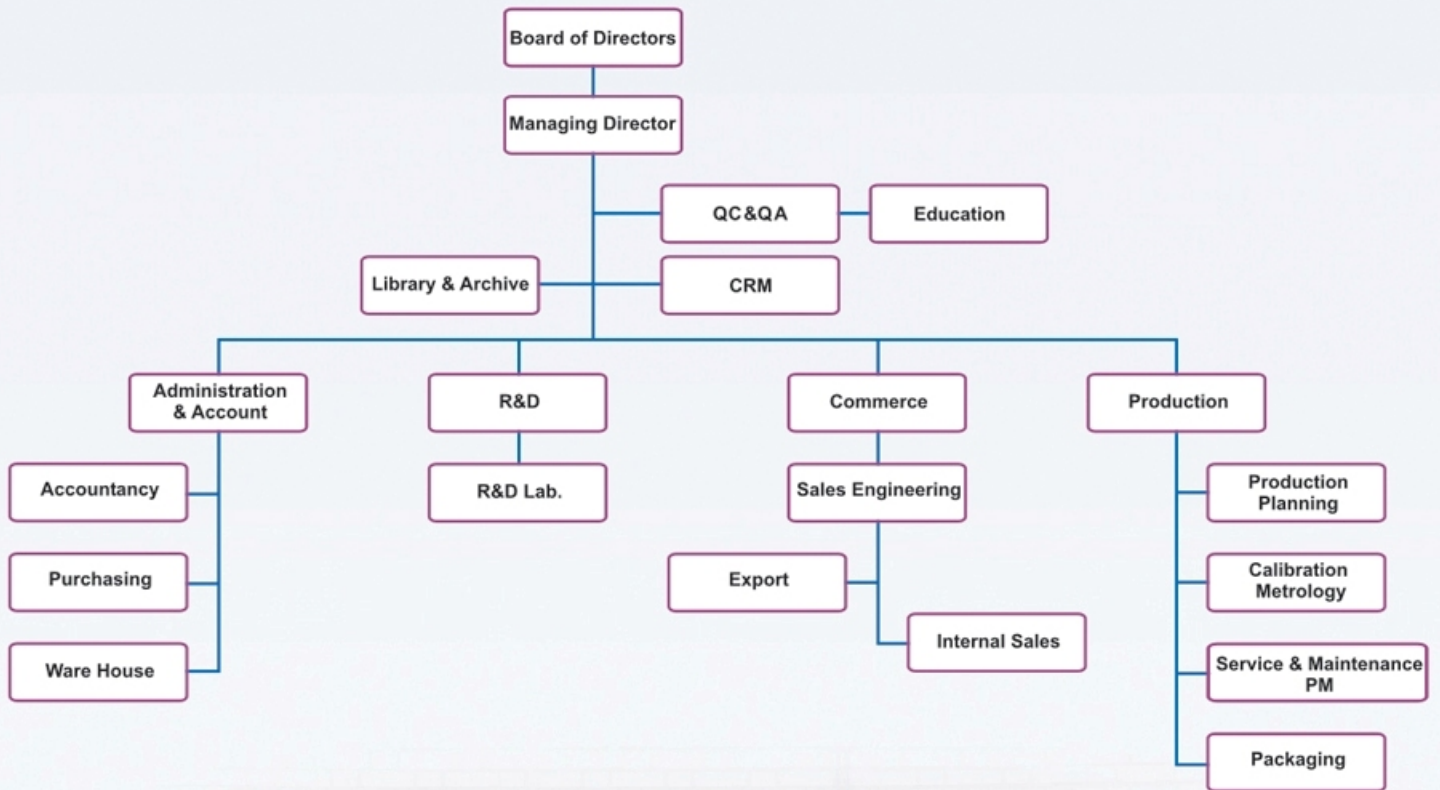


**← ENISON**

**LAB & PHARMACEUTICAL IND. INC.**

[www.enisonlabs.com](http://www.enisonlabs.com)

# ENISON Lab. Ind. Flow Chart





## Our Mission

Our Mission is to make available to our customers, whether they are start-ups or established concerns, the highest quality reagents for the serological (latex based) and lateral flow tests at the lowest possible prices. With the fast growing need for rapid diagnostic assays and the cost effectiveness of manufacturing these assays in-house, we believe this will open the market for these tests and will help provide a level of healthcare solutions now only accessible to few countries.

Our prices are very competitive and the quality from lot to is guaranteed. We pride ourselves in supplying reliable technical support to all of our customers, providing them with any assistance that might be required to maintain the quality of our reagents and their finished products.



## ▶▶ Research and development

Research and development activity is one of the main features in the strategy of Enison , where **more than 15% of the annual turn over is reinvested.**

As a result of this research effort , Enison develops its products with its **own technologies.**



## ▶▶ Technologies

Technologies oriented to the achievement of **highly purified antigens , antibodies and materials:**

- Rabbit and goat **polyclonal antibody** production and purification
- polystyrene latex particles in different sizes

Technologies oriented to the productions of reagents:

- **Latex particle agglutination** ( slide tests )
- Carbon particle agglutination
- Immunochromatography
- Biochemistry reagent



## ▶▶ Production

All production procedures at Enison follow **GMP ( Good Manufacturing Practices )** regulations to guarantee the total quality of the final product.

The strict monitoring of the Standard Operating Procedures (S.O.P) assures the proper functionality and reproducibility of the different reagent production batches.



## ▶▶ Quality Assurance

All reagents developed by Enison must achieve the most rigid quality standards and must meet the particular needs of the different markets to which they are addressed.

Enison quality system has been certified conforming to the **ISO 9001:2008** and **ISO 13485:2003** standard.

The Quality Assurance Department at Enison is responsible for the **Total Quality of the Company** , submitting all procedures to a very strict control from the conception and research of new product to its final manufacturing and distribution.

As for regulatory affairs , Enison manufacturing processes are subject to a constant control process and have successfully undergone numerous audits and assessments by the most renowned international regulatory agencies: **CE Mark-European Union** and **Iranian Ministry of Health .**



## ▶▶ Product Lines

### Serological Kits

Manual and rapid use reagents , based on latex and charcoal agglutination , for detection of Rheumatoid and Inflammatory diseases , Syphilis & Streptococcal infection .

### Onestep ( Rapid ) Tests

Lateral Flow chromatographic Immunoassay for detection of drugs of abuse , pregnancy , fertility and infectious diseases.

### Biochemistry Kits

Automated and manual , enzymatic and colorimetric assays for a wide range of biochemical determinations.

### New product

New products under development :  
Dehydrated culture media  
Urine reagent strips



## ▶▶ OEM Capabilities :

Enison provides a number of customized services to professional distributors and partnering affiliates. The production fully supports branding and products within appropriate time of ordering.




# PRODUCT LIST

---

 Serological Kits

---

 One step ( Rapid ) tests

---

 Biochemistry Kits

---



serological kits	Packaging	Reference	Sample	Assay time	Sensitivity
<b>Inflammatory / Rheumatoid</b>					
CRP : Rapid latex test for qualitative and semiquantitative determination of C-reactive protein in serum by agglutination of latex particles on slide.	100 test	1200100	serum	2 minutes	6 mg/l
RF : Rapid latex test for qualitative and semiquantitative determination of Rheumatoid factor in serum by agglutination of latex particles on slide.	100 tests	1300100	serum	2 minutes	10 IU/ml
HCG Direct : Rapid latex test for qualitative and semiquantitative determination of pregnancy in urine by agglutination of latex particles on slide.	100 test	1400100	serum	2 minutes	200 IU/ml
<b>Syphilis</b>					
RPR : Rapid test for qualitative and semiquantitative determination of reagins in serum by flocculation of charcoal particles on slide.	150 tests 500 tests	1100150 1100500	serum/plasma	8 minutes 8 minutes	
VDRL : Rapid test for qualitative determination of reagins in CSF and serum by flocculation of antigen on slide.	3 ml	1900100	serum/plasma /CSF	4 minutes	



serological kits	Packaging	Reference	Sample	Assay time	Sensitivity
<b>Streptococcal Infection</b>					
ASO Antigen : Lyophilized antigen for titration of streptolysin - O antibodies in serum . ASO buffer : For antigen preparation and serum dilution .	5x15ml  1x1000ml	1500015	serum	60 minutes	
ASO plus : Lyophilized antigen for titration of streptolysin - O antibodies in serum . ASO buffer : For serum dilution .	5x15ml  1x1000ml	1600016	serum	60 minutes	
SLO : Rapid latex test for qualitative and semiquantitative determination of streptolysin-O antibodies in serum by agglutination of latex particles on slide.	100 test	1700100	serum	2 minutes	200 IU/ml
ASO Buffer: Powdered buffer for ASO test (to prepare 1000 ml buffer ) .		1801000			








One Step ( Rapid ) Tests	Format	Reference	Sample	Assay time	Sensitivity
<b>Drugs of abuse</b>					
Saliva Morphine: Rapid test for determination of morphine.	Cassette	2400001 2400012	saliva	5-7 minutes	40ng/ml
Morphine : Rapid test for determination of morphine.	strip	2000050	urine	2 minutes	300ng/ml
THC : Rapid test for determination of marijuana.	strip	2300050	urine	2 minutes	50ng/ml
T&M: Rapid test for determination of Morphine and marijuana.	strip	2600050	urine	4 minutes	Morphine 300ng/ml THC 50ng/ml
Amphetamine : Rapid test for determination of Amphetamine .	strip	2800050	urine	2 minutes	1000ng/ml
<b>Pregnancy &amp; Fertility</b>					
Lovin : hCG pregnancy test .	strip	2100050	urine	2 minutes	25mIU/ml
Lovin Rose : hCG pregnancy test .	Cassette	2200050	urine	2 minutes	25mIU/ml
LH: Ovulation test .	strip	2700005	urine	5 minutes	25mIU/ml

One step ( Rapid ) Tests	Format	Reference	Sample	Assay time	Sensitivity
<b>Infectious disease</b>					
PSA: Prostatatic specific antigen test .	strip	3000050	serum / plasma	15 minutes	4 ng/ml
HBsAg: Hepatitis B surface antigen test .	strip	3100050	serum / plasma	15 minutes	1 ng/ml
HIV 1/2 : Human Immunodeficiency Virus 1/2 test ( 2 lines ).	strip	2900050	serum / plasma	15 minutes	custom
Saliva Alcohol: Rapid test for qualitative determination of the presence of alcohol.	strip	2500050	saliva	2 minutes	% 0/02





## Other Items:

- Polystyrene microparticles:  
Polystyrene Latex particles are available in particle size 0.1-0.3  $\mu\text{m}$  to 0.4-0.6  $\mu\text{m}$  diameter.
- Cleaning solution for biochemistry auto analyzer:  
Hetergent is a phosphate-free solution with anti-bacteri effect that has been designed for biochemistry auto analyzer. This solution is used for cleaning probes and reactive cuvettes without affecting on the quality of the tests.
- Cardiolipin solution
- Lecithin solution
- Polyclonal Antibodies
- (Anti CRP, Anti streptolysin-O,...)